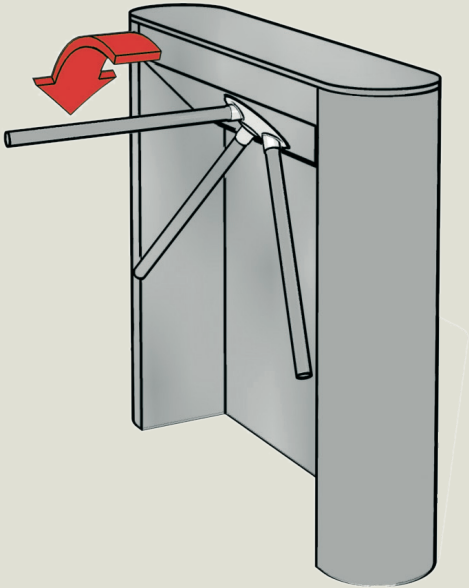


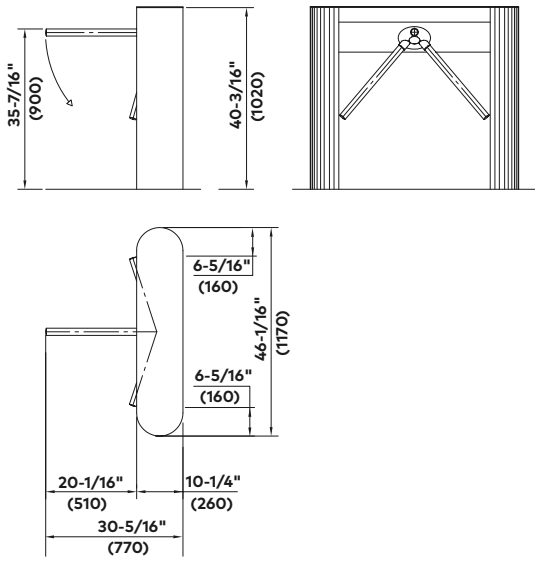
TPB-C01

Tripod turnstiles

Standard units	TPB-C01
Construction	Housing and base columns enclosed with additional back plate made of stainless steel AISI 304.
Housing material	AISI 304 stainless steel.
Base column, base or flange plate material	AISI 304 stainless steel.
Crossbar material	AISI 304 stainless steel.
Finish	Stainless steel satin finish.
Function	Power assist—Power-assisted motion; servo-positioning drive/ electronically controlled in both directions behavior in event of power failure can be selected for each direction: free or blocked).
Electrical equipment	Control system integrated in the unit.
Power supply	110 – 230 VAC, 50/60 Hz, 253 VA.
Standby power consumption	10 VA.
Installation	Finished floor.
	Not suitable for outdoor installation.



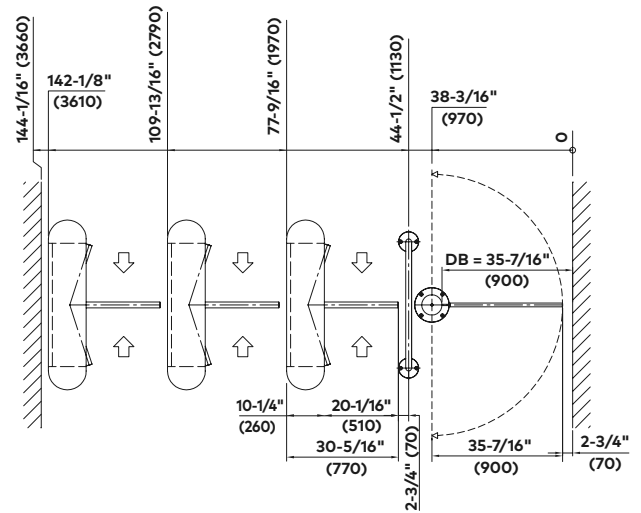
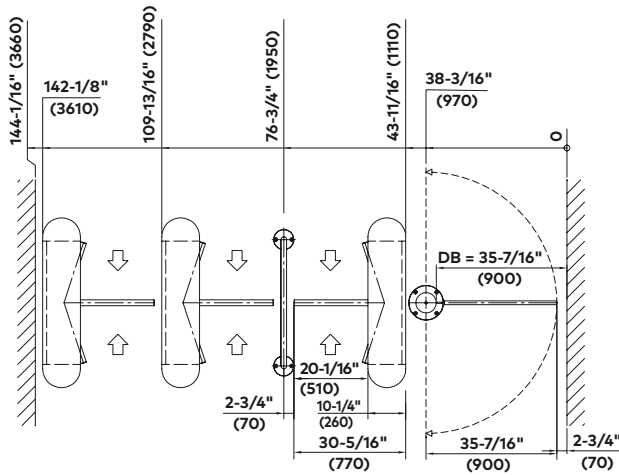
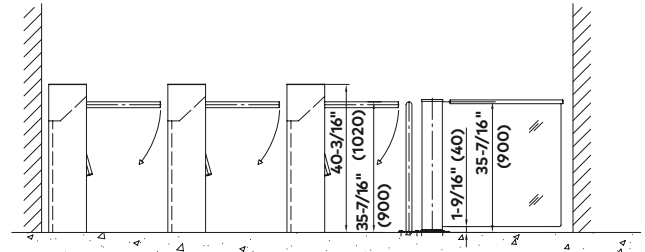
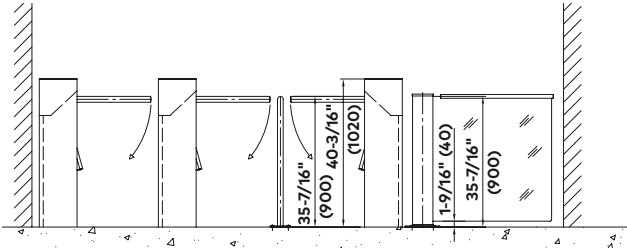
TPB-C01 elevation drawings



Note
 Dimensions are shown as inches followed by millimeters; for example, 1" (25).

TPB-C01

Installation drawings



Options

Function

- Counter.
- Escape route module with emergency push-button, additional emergency push-button available.
- Collapsible bars.

Electrical equipment

- Operating panels and frames or surface mount housing.
- Various signal devices.

Installation

- Pallet with stainless steel ramp and rubber covering, approx. 3' 3-5/16" x 4' 11-1/16" (1.0 m x 1.5 m), height approx. 1-1/4" (32 mm).

o optional



OPL 05 operating panel.



Signal device LED arrow-cross (installed in the housing or in the cover plate on both sides).

